



Co-funded by the
Erasmus+ Programme
of the European Union

E³UDRES²

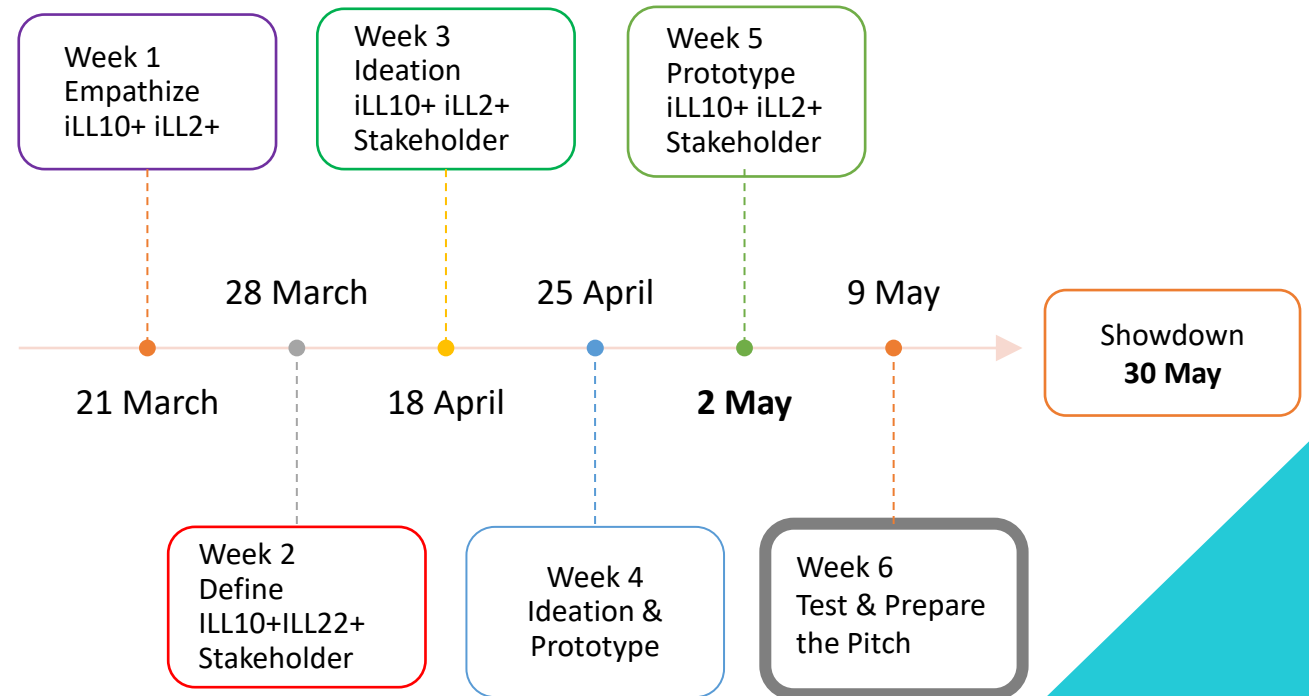
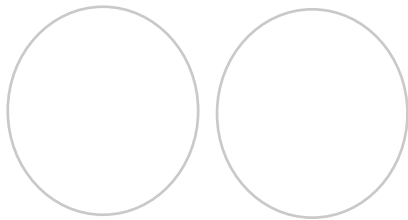
Engaged and Entrepreneurial European University as
Driver for European Smart and Sustainable Regions



6TH SESSION



Planning of the sessions



Session 6

1. Poster & Pitch preparation
2. Outboarding: Showdown & Assessment Talks
3. To do next weeks



POSTER & PITCH

- Deadline - 19th of May
- Send by wetransfer to Sara Gilissen sara.gilissen@ucll.be and Rik Fonteyn rik.fonteyn@ucll.be

**Name of the files:
number of the ILL +
title + name of the
student representative**

Poster



A4
PDF format

Pitch



MP4 format
Up to 1 minute and a
half

Poster Template

E. Blasko, A. Rota, E. Shiroku, A. Soares, A. Uskaure



Sustainable Campus



1. Overview

During the ILL sessions we wanted to come up with ways to create more sustainable campuses.

After identifying the most significant waste sources, we decided to focus on the management of plastic bottles, cups and food packaging.

2. Procedure

This course - I Living Lab - provided the opportunity for students from five different nationalities worked as a team to create a more sustainable campus. Our teamlab is composed by 5 creative and goal-oriented ladies: Enerta from Italy (Erasmus student in St. Pölten, Austria), Annija from Latvia, Adriana S. from Portugal (doing an internship in Lithuania), Adriana R. from Romania and Eszter from Hungary.

Using development methods such as design thinking and the six hats method we came up with an action plan:



Figure 1.: Process design steps

We should also encourage students to bring their own bottles, thermoses, cups or lunch boxes by offering them discounts and perks such as being able to make their own coffee in designated areas.

To handle the financial impact for the free bottles and the electric equipment we propose to find sponsors. Students can pay as much as they can afford for the coffee or tea they drink.

We also identified different communication channels to let campus users know this actions and also promote this solutions.

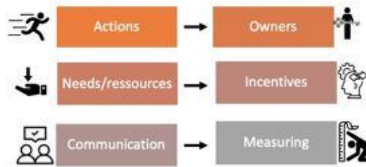


Figure 2.: Parts of the action plans

4. Next Step

Talk with Involved Stakeholders (Management, Students and Relevant staff) and discuss some of the proposed solutions and how to implement these actions.

5. Conclusions

In order to fix some issues regarding to our targets, we presented some solutions in our results while being mindful on the economic impact of those solutions.

Acknowledgements

We would like to thank João Fernandes and Sara Gilissen for supporting us in this project.

References

- [1] Edward de Bono - The 6 Thinking Hats
- [2] Francesca Ostuzzi - Design Thinking
- [3] Ellen MacArthur Foundation - Circular Economy

Guiding questions for the poster:

- What was the initial challenge of the ILL?
- Who was in the ILL team (students, EE, stakeholder)?
- Based on the "Timeline of an I Living Lab: Overview", briefly provide insights in the process developed:
 - What was the concrete problem?
 - Which ideas emerged?
 - Which idea was prototyped (if applicable)?
 - What is the added value of this idea/solution?
- In terms of learning:
 - What are the top 3 future skills that were most developed?
 - How did the design thinking framework support the learning?
- What are the next steps: What are the plans of the group after the showdown?

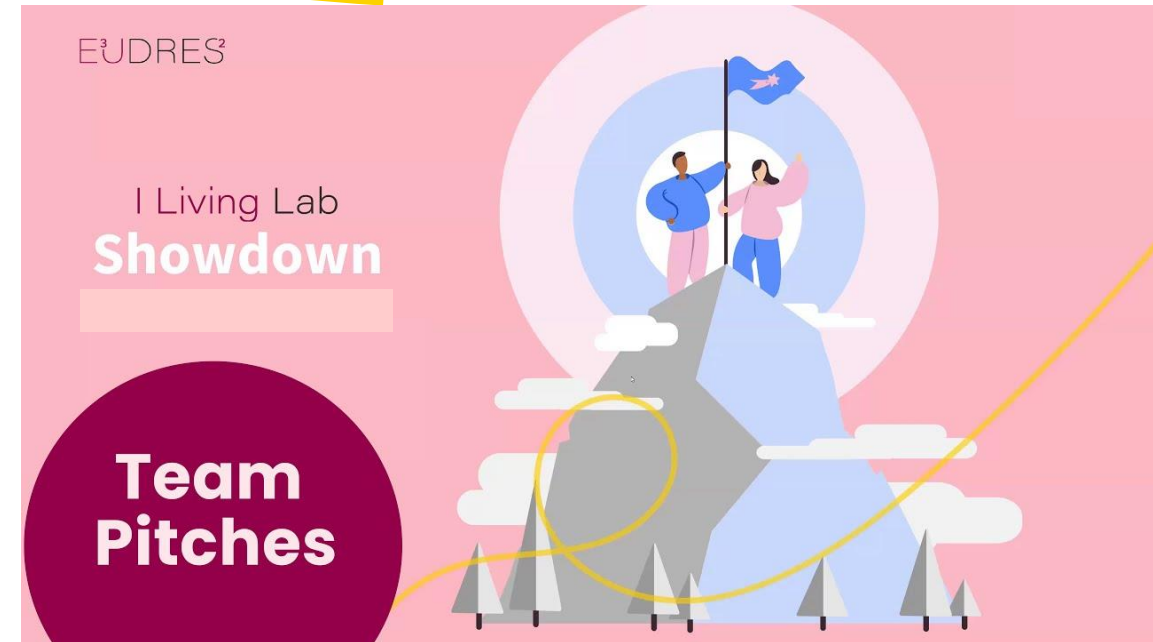
Tips for the Pitch Video

CONTENT What should be in the pitch?

- What is Challenge
- Present your team (country and background)
- What did you do as a team
- What is the outcome?
- Future steps

Past ILL' Pitches

1. **E³UDRES² I Living Labs Winter 2021** | https://www.youtube.com/watch?v=UX_-yWcL7E0
2. **E³UDRES² I Living Labs Spring 2022** | <https://www.youtube.com/watch?v=yZqF1dwANew>



Week 6

Finalize...

Steps until Showdown

- Discussion on the stuff for “ILL – Showdown” AND testing steps for this event
- Looking back on the learning journey together with various creative methods
- Finding ways to stay in touch with each other

- *Finalizing preparations for Showdown*
- *Final entries in the E-Portfolio and Assessment report*

Phase 1

Onboarding

Preparation for the
I Living Lab



Phase 2

I Living Lab

Working on the
challenge with your
team



Phase 3

Outboarding

Final steps of the
I Living Lab

E³UDRES²

Engaged and Entrepreneurial European University as
Driver for European Smart and Sustainable Regions

OUTBOARDING:

- I LIVING LAB SHOWDOWN
- ASSESSEMENT TALKS

Outboarding

Outboarding Phase



- Celebrating the successful ending of the ILLs in the Showdown
- Educational Entrepreneurs conduct assessment talk meetings with each student including deciding together on the grade
- Team Feedback about the time in the ILL within the group

Schedule SHOW DOWN 30/5

**SHOW DOWN announcement with link to meeting
TO DO on 22/5**

**DEADLINE FOR PITCH AND POSTER
THURSDAY 19/5**

Video: MP4 formaat - Poster (A4) in PDF

**please send it to Sara and Liesbeth +
Include in the name of your files:
number of ILL – title – Name of the student
representative**

**One student representative for the show down
please send the name to Sara before 19/5**

Invite in your local showdown

- **Teachers and policy of your institution**
- **Challengers**
- **Alumni students**

17.00 Local introduction (organized by TSI/EE at the campus of each institution)		
From the start all students go to the physical (on site) separate conference classroom of their TOPIC in their institution		
17.30 Welcome Online by student hosts to all topic groups (15')		
online plenary introduction		
17.45 Go to online break out per TOPIC CE, AI or WB		
TOPIC CIRCULAR ECONOMY GROUP	TOPIC ARTIFICIAL INTELLIGENCE	TOPIC WELLBEING
Welcome by host – moderator (online) Sara	Welcome by host- moderator (online) Liesbeth	Welcome by host-moderator (online) Danique
Local moderators per country	Local moderators per country	Local moderators per country
8-9 video pitches (all pitches in one row)	8-9 video pitches (all pitches in one row)	8-9 video pitches (all pitches in one row)
Q&A by 3 jury members (online) & representative of the Living Lab (max. 3 questions per living lab – one per jury member)	Q&A by 3 jury members (online) & representative of the Living Lab (max. 3 questions per living lab – one per jury member)	Q&A by 3 jury members (online) & representative of the Living Lab (max. 3 questions per living lab – one per jury member)
Voting by students individually (online tool)	Voting by students individually (online tool)	Voting by students (online tool)
Score by 3 jury members (online)	Score by 3 jury members (online)	Score by 3 jury members (online)
18.30 Short break		
Return to (online) plenary session		
18.45 Announcement of the 'winners' by the student hosts		
19.00 online Closing & Goodbye by the students host		
Local afterparty (organized by TSI/EE at the campus of each institution)		

To do next weeks

As a Team

- Finalizing poster & pitch
- Choose your representative for the showdown



**Send to: Sara Gilissen sara.gilissen@ucll.be
Before 15th May**

At individual level

- Finalize your e-Portfolio 😊
- Pay attention to the schedule of assessment talks

E³UDRES²

Engaged and Entrepreneurial European University as
Driver for European Smart and Sustainable Regions